

Industrial confidentiality

PRODUCT SPECIFICATION

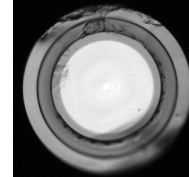
Product code: IXF-3CF-PAS-20-250-300-0.08

	Parameter	Specification	Units
1	Core diameter	20 ± 1	μm
2	Core NA *	0.08 ± 0.005	-
3	Multimode Background @ 1100 nm	<10	dB/km
4	Inner clad diameter	250 ± 3	μm
5	Inner clad NA	0.22 ± 0.02	-
6	Clad diameter	300 ± 3	μm
7	Core-clad offset	<3	μm
8	Outer clad NA	>0.46	-
9	Coating diameter	450 ± 20	μm
10	Proof test level	>78	kpsi

*: Calculated from refractive index profile on fiber

Comments

Triple clad design: all circular clad shape
Multimode cladding defect free (HeNe tested)
OH core concentration <0.1 ppm
Matched to 3CF-Ho-O-20-250-300 active Holmium doped fiber



Written by: T. ROBIN

Effective date of this document: 25/04/2019

Edition: A

Document reference: IXF-3CF-PAS-20-250-300-0.08_edA.pdf

PSD-L-Q-E-086-I

